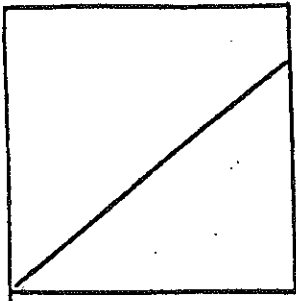


WHAT DOES A GRAPH MEAN?

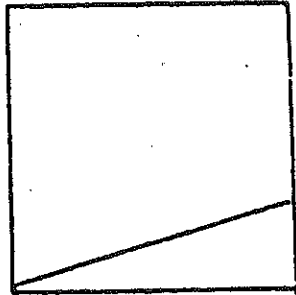
**This page should be included in your NOTEBOOK

Linear



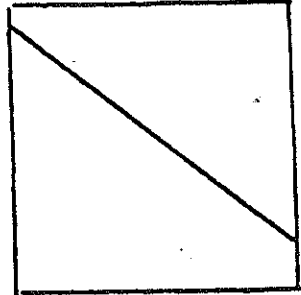
Rapid increase
Steady rate

①



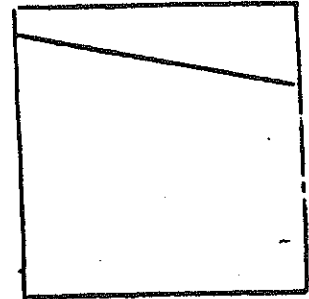
Slow increase
Steady rate

②



Rapid decrease
Steady rate

③



Slow decrease
Steady rate

④

Direct

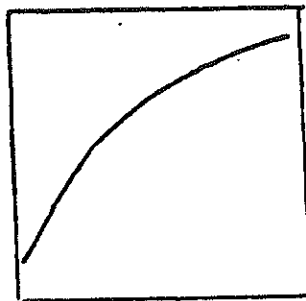
Inverse

Curvilinear



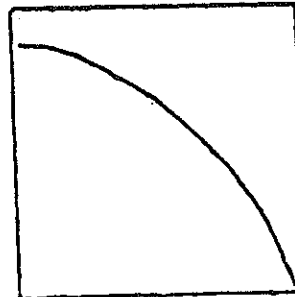
Value increase
Rate increases

⑤



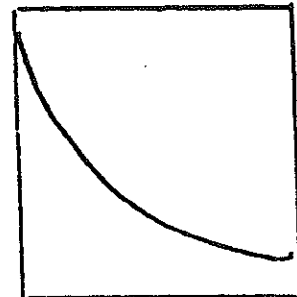
Value increases
Rate decreases

⑥



Value decrease
Rate increases

⑦



Value decreases
Rate decreases

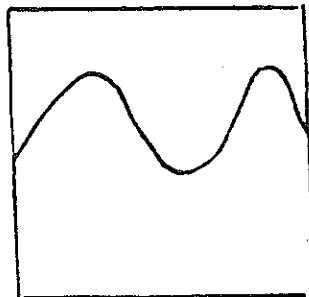
⑧

Direct

Inverse

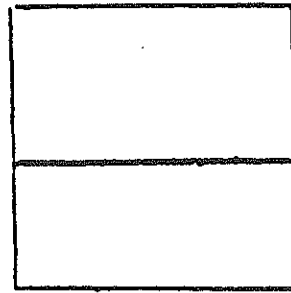
DEPENDENT

INDEPENDENT



Cyclic variation

⑨



No Change

⑩

No effect